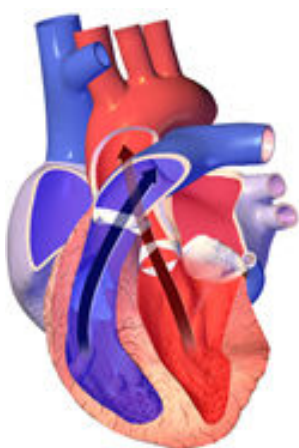
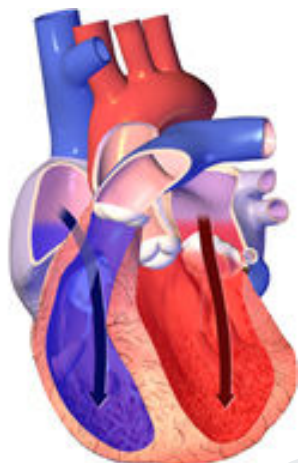


Heart Failure

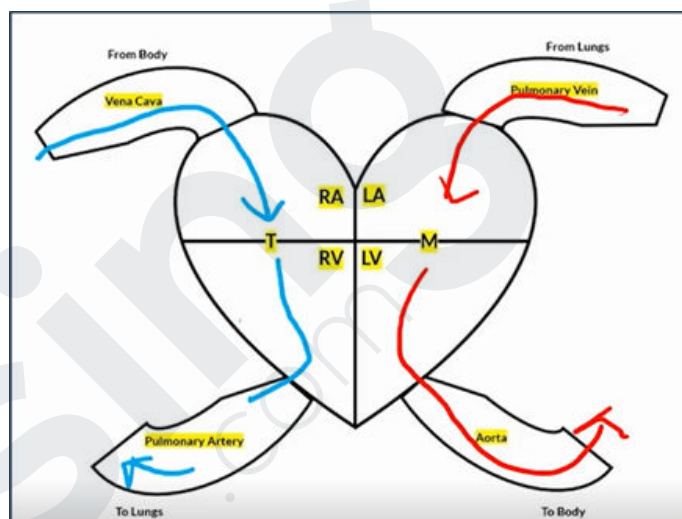
Heart Failure - One or both ventricles fail causing ↓ cardiac output



Systole
(pumping)



Diastole
(filling)



BruceBlaus, CC BY-SA 4.0 <<https://creativecommons.org/licenses/by-sa/4.0/>>, via Wikimedia Commons

Left Sided HF	Right Sided HF
Systolic-Bad Squeeze Diastolic-Bad Fill	Lung pathology
(Fluid backs up to lungs)- cough, pink frothy sputum, activity intolerance, fatigue	(Fluid backs up to body)- Edema, Ascites, JVD, activity intolerance, fatigue
CAD, ACS, Cardiomyopathy, Valve issues	Pulmonary hypertension, PE