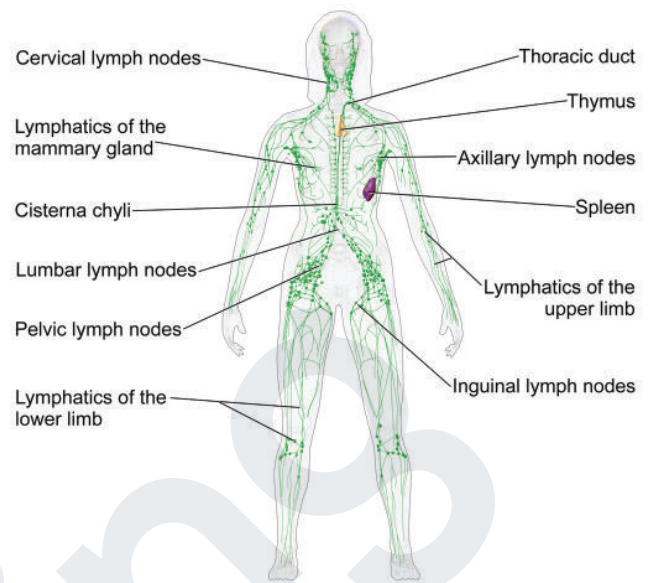
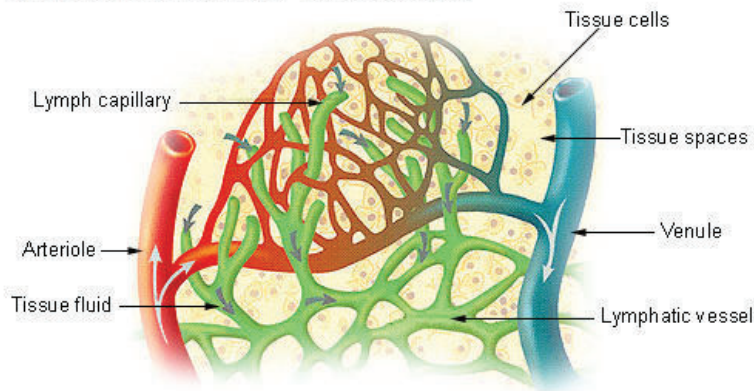


# LYMPH SYSTEM ANATOMY

## Lymph Capillaries in the Tissue Spaces



Attribution: By BruceBlaus. When using this image in external sources it can be cited as: Blausen.com staff (2014). "Medical gallery of Blausen Medical 2014". WikiJournal of Medicine 1 (2). DOI:10.15347/wjm/2014.010. ISSN 2002-4436. - Own work, CC BY 3.0, <https://commons.wikimedia.org/w/index.php?curid=28086436>

## Lymph Vessels

Organ	Function
Lymph-capillaries	<ul style="list-style-type: none"> <li>Extracellular fluid move from interstitial space into lymph system</li> </ul>
Lymphatic collecting vessels	<ul style="list-style-type: none"> <li>Has valves and moves fluid through lymph system</li> </ul>
Lymphatic ducts	<ul style="list-style-type: none"> <li>Larger collecting vessels which transport fluid to subclavian veins and back to the circulatory system</li> <li>Cisterna chyli receives lymph from veins and splits into R &amp; L sides</li> </ul>
Lymph Fluid	<ul style="list-style-type: none"> <li>Transport medium for the lymph system</li> </ul>
Lymph Nodes	<ul style="list-style-type: none"> <li>Site for T-Cells, B-Cells and other WBCs</li> <li>Acts as a filter for the lymph system to destroy pathogens</li> </ul>
Spleen	<ul style="list-style-type: none"> <li>Produce immune cells</li> <li>Remove particulate matter &amp; blood cells (red blood cells)</li> <li>Produce blood cells during gestation</li> </ul>
Thymus	<ul style="list-style-type: none"> <li>Site of maturing T-Cells</li> </ul>