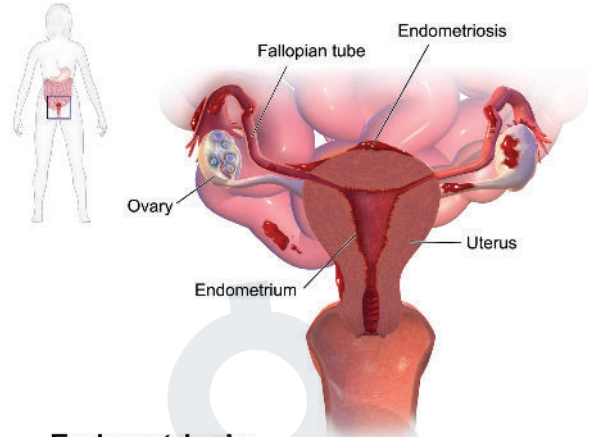


ENDOMETRIOSIS PATHOCHART

PATHOPHYSIOLOGY

Endometriosis is a painful, inflammatory condition that occurs when there is abnormal tissue growth outside the uterus in females that can cause infertility if untreated.



ASSESSMENT FINDINGS

- Dysmenorrhea
- Pain
- Painful intercourse
- Hematuria, dysuria
- Infertility

Endometriosis

Attribution: By BruceBlaus. When using this image in external sources it can be cited as: Blausen.com staff (2014). "Medical gallery of Blausen Medical 2014". WikiJournal of Medicine 1 (2). DOI:10.15347/wjm/2014.010. ISSN 2002-4436. - Own work, CC BY 3.0, <https://commons.wikimedia.org/w/index.php?curid=29600447>

DIAGNOSTICS

- Pelvic exam
- Transvaginal ultrasound
- Laparoscopy

NURSING PRIORITIES

- Promote comfort

THERAPEUTIC MANAGEMENT

- Heat packs
- Relaxation techniques
- Laparoscopic removal of adhesions
- Bilateral salpingo-oophorectomy in severe cases

MEDICATION THERAPY

- Contraceptives
- Androgens