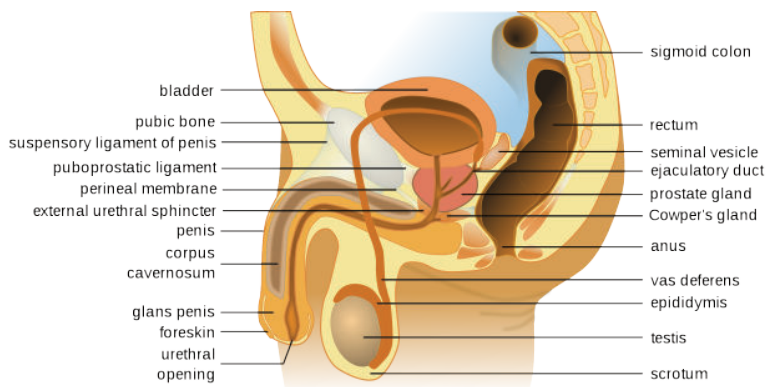


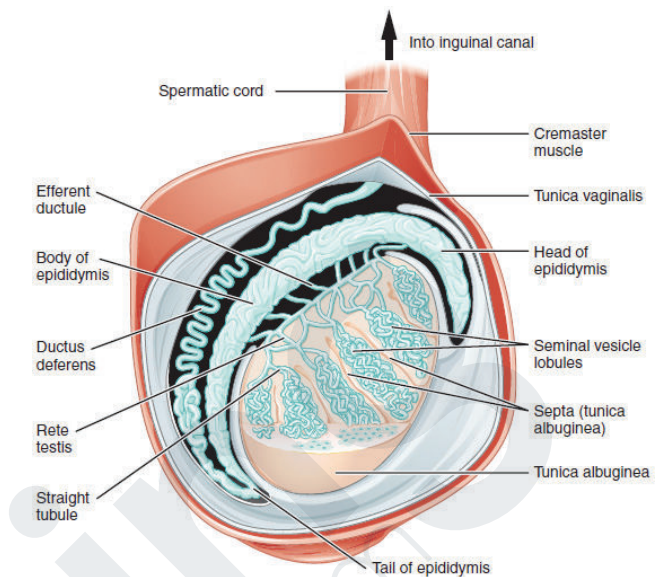
REPRODUCTIVE ANATOMY

Male Reproductive Anatomy



Attribution: By Male_anatomy.png: alt.sex FAQderivative work: Tsaitgaist (talk) - Male_anatomy.png, CC BY-SA 3.0, <https://commons.wikimedia.org/w/index.php?curid=6569849>

Testes



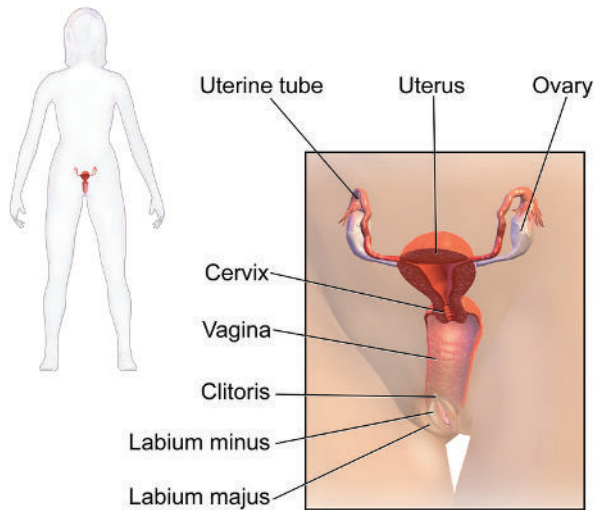
Attribution: By OpenStax College - Anatomy & Physiology, Connexions Web site. <http://cnx.org/content/col11496/1.6/>, Jun 19, 2013., CC BY 3.0. <https://commons.wikimedia.org/w/index.php?curid=30132978>

Male Reproductive Anatomy

Organ	Function
Testes	<ul style="list-style-type: none"> Creates sperm and readies for transport Formation of Leydig Cells Produces testosterone
Scrotum	<ul style="list-style-type: none"> Regulates temperature and protects testes
Spermatic Ducts	<ul style="list-style-type: none"> Transports sperm from the testes to the urethra
Seminal Vesicles	<ul style="list-style-type: none"> Secretes yellow fluid that constitutes 60% of semen
Prostate Gland	<ul style="list-style-type: none"> Secretes milk substance which accounts for 30% of semen
Cowper's Glands	<ul style="list-style-type: none"> Produces a lubricating fluid Neutralizes acid from residual urine
Penis	<ul style="list-style-type: none"> Deposits semen into vagina Route for urination

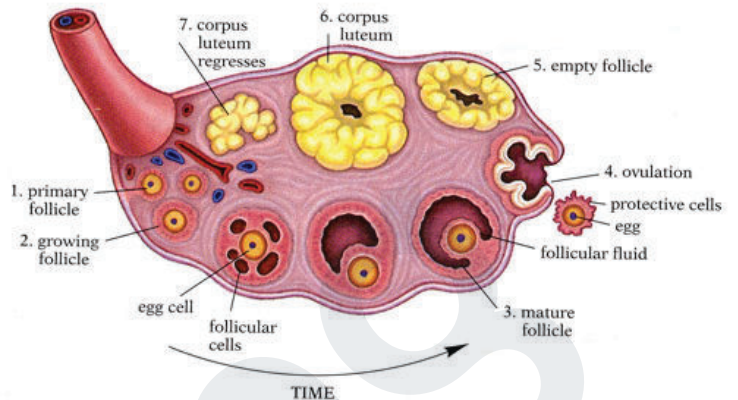
REPRODUCTIVE ANATOMY

Female Reproductive Anatomy



Attribution: By BruceBlaus. When using this image in external sources it can be cited as: Blausen.com staff (2014). "Medical gallery of Blausen Medical 2014". WikiJournal of Medicine 1 (2). DOI:10.15347/wjm/2014.010. ISSN 2002-4436. - Own work, CC BY 3.0, <https://commons.wikimedia.org/w/index.php?curid=29600452>

Ovary Anatomy



Attribution: By Kimanh Nguyen - <https://mla-lima.wikispaces.com/Anatomy+of+the+Ovaries?responseToken=01fc85f07c85da7489dd7e2a01e82bf0>, CC BY-SA 3.0, <https://commons.wikimedia.org/w/index.php?curid=71030506>

Female Reproductive Anatomy

Organ	Function
Ovaries	<ul style="list-style-type: none"> • Produces eggs and sex hormones • Progesterone and Estrogen
Fallopian Tubes	<ul style="list-style-type: none"> • Canal for transport of egg from ovary to uterus
Uterus	<ul style="list-style-type: none"> • Harbors fetus during gestation • Provides a nutrition source for fetus • Expels fetus during labor
Vagina	<ul style="list-style-type: none"> • Pathway from uterus to outside • Canal for childbirth, intercourse and menstruation
Vulva	<ul style="list-style-type: none"> • Contains erectile tissue (clitoris) • Bartholin's Glands - secretes lubrication into vaginal canal • Skene's Glands - lubricates urethral opening