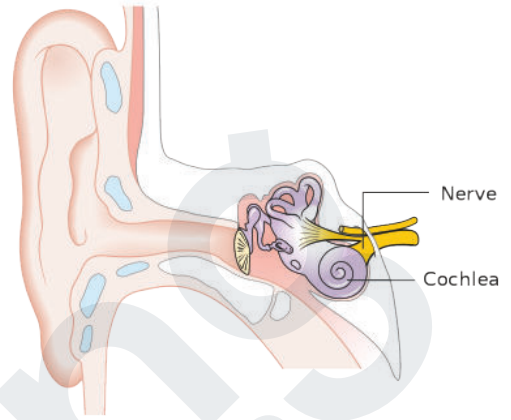
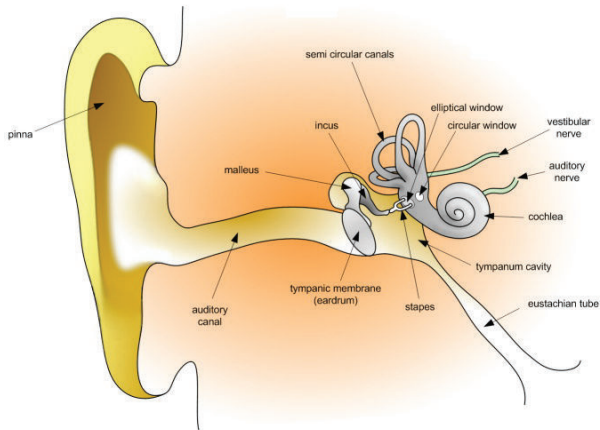


TYPES OF HEARING LOSS



Attribution: By Cancer Research UK - Original email from CRUK, CC BY-SA 4.0, <https://commons.wikimedia.org/w/index.php?curid=34334173>

Conductive Hearing Loss

- Problems with external to middle ear
- Caused by
 - Inflammation
 - Obstruction by object or cerumen
 - Eardrum changes
 - Abnormal tissue
- Reversible condition

Sensorineural Hearing Loss

- Problems with cochlea or CN VIII (inner ear)
- Caused by
 - Prolonged exposure to loud noise
 - Presbycusis
 - Hearing loss related to aging
 - Ototoxic medications
- Often permanent
 - Treated with assistive devices (hearing aids)