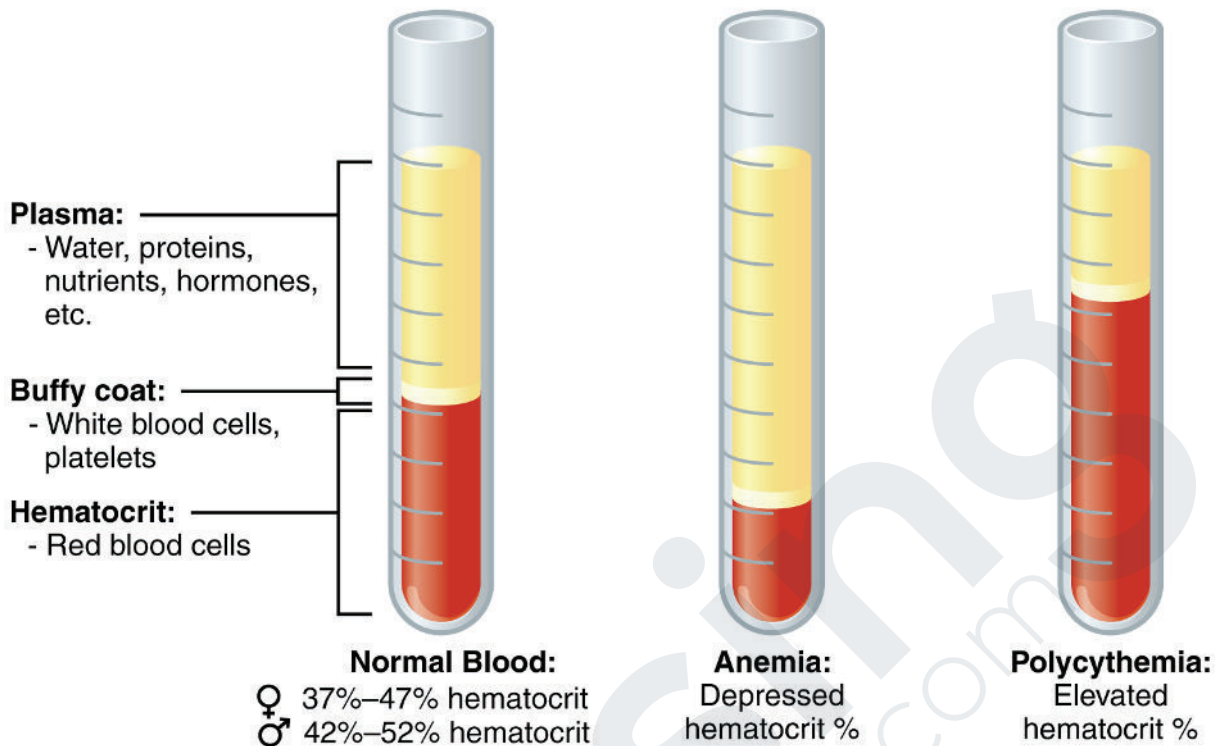


BLOOD COMPONENTS



Attribution: By OpenStax College - Anatomy & Physiology, Connexions
Web site: <http://cnx.org/content/col11496/16/>, Jun 19, 2013, CC BY 3.0,
<https://commons.wikimedia.org/w/index.php?curid=30148163>

	Normal	Anemia	Polycythemia
Hematocrit • Red Blood Cells	Men - 42-52% Women - 37-47%	Men - <42% Women - <37%	Men - >52% Women - >47%
Plasma • Water • Proteins • Nutrients • Hormones	Men - 47-52% Women - 52-62%		
Buffy Coat • White Blood Cells • Platelets	~ 1%		