

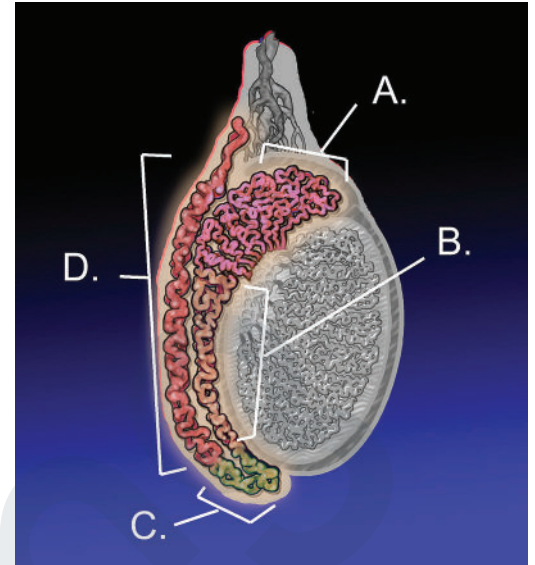
# EPIDIDYMITIS PATHOCHART

## PATHOPHYSIOLOGY

Epididymitis is an inflammation of the epididymis, or the tube that connects the testicles to the vas deferens. It is often caused by sexually transmitted diseases such as gonorrhea or chlamydia or infections of the urinary tract.

## ASSESSMENT FINDINGS

- Scrotal or testicular pain
- Pain when urinating or urethral discharge
- Fever
- Chills



Attribution:By KDS444 - Own work. CC BY-SA 3.0.  
<https://commons.wikimedia.org/w/index.php?curid=19018077>

## DIAGNOSTICS

- Ultrasound
- Urine culture

## NURSING PRIORITIES

- Maintain comfort
- Provide support with ambulation

## THERAPEUTIC MANAGEMENT

- Antibiotics
- Ice application to scrotum
- Sitz baths
- Surgical removal of epididymis or testicle (if necessary)

## MEDICATION THERAPY

- Antibiotics
- NSAIDs