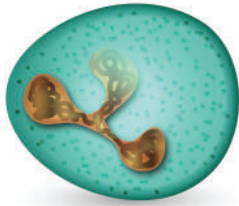
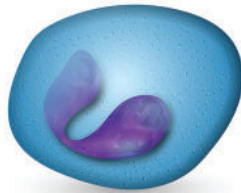


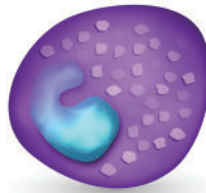
WHITE BLOOD CELLS



Neutrophil



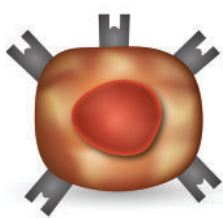
Eosinophil



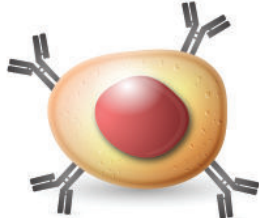
Basophil



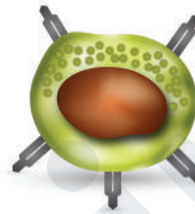
Monocyte



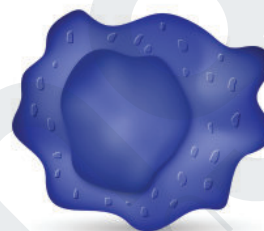
T Cell



B Cell



Natural killer



Macrophage

Attribution: © extender_01

White Blood Cell	Cause of Change
Neutrophil	Inflammation (increase)
Eosinophil	Inflammation (increase) Allergic Response (increase) Parasites (increase)
Basophil	Inflammation (increase) Allergic Response (increase)
Lymphocyte	Infection (increase) Leukemia (increase) Autoimmune Disease (decrease) HIV (decrease) Chemotherapy (decrease)
Monocyte	Infection (increase) Inflammation (increase)