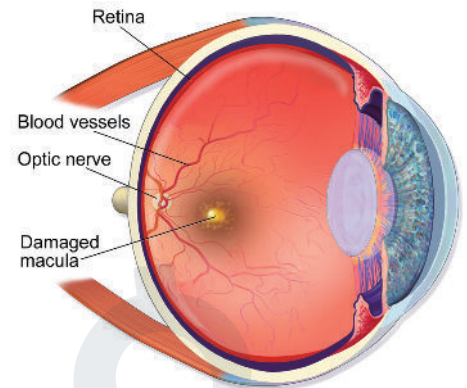


MACULAR DEGENERATION PATHOCHART

PATHOPHYSIOLOGY

Macular degeneration is a progressive loss of central vision, affecting the central focusing area of the retina called the macula. Age, genetics and environmental factors are all causes of the development of the disease. It's most commonly described as a progressive worsening of central vision. While there is no cure, in certain cases progression can be slowed down with some medications or surgical treatment.



Macular Degeneration

Attribution: By BruceBlaus - Own work, CC BY-SA 4.0.
<https://commons.wikimedia.org/w/index.php?curid=60114082>

ASSESSMENT FINDINGS

- Complains of distorted vision
- Complaints of visual hallucinations
- Complaints of blurred vision or difficulty with colors

DIAGNOSTICS

- Vision tests
- Ophthalmic examination
- Fluorescein dye angiography
- Electroretinogram

NURSING PRIORITIES

- Educate patient on safety precautions
- Maximize sensory perception
- Optimize functional ability

THERAPEUTIC MANAGEMENT

- Eye drops
- Surgical intervention in select cases

MEDICATION THERAPY

- Eye drops aimed at reducing growth of new retinal vessels