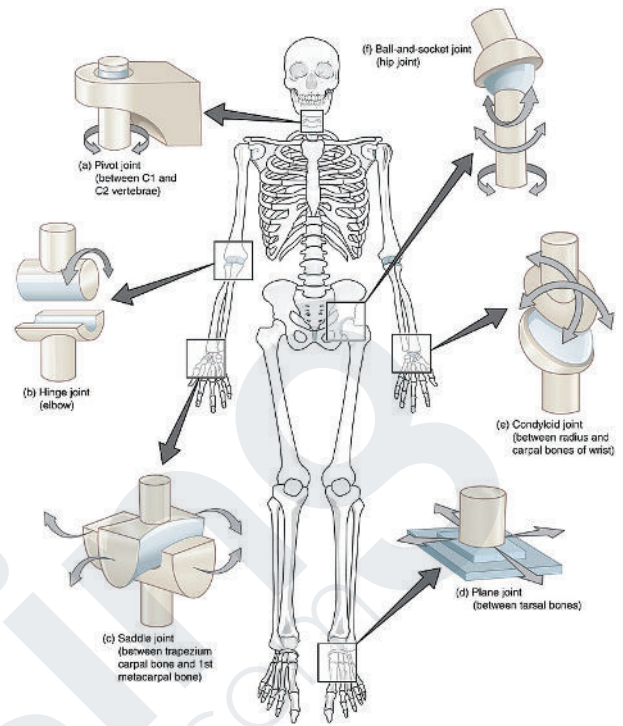


JOINT ANATOMY



Attribution: By Manu5 - <http://www.scientificanimations.com/wiki-images/>,
CC BY-SA 4.0, <https://commons.wikimedia.org/w/index.php?curid=74552215>



Attribution: By OpenStax College - Anatomy & Physiology,
Connexions Web site. <http://cnx.org/content/col11496/1.6/>, Jun 19, 2013.,
CC BY 3.0, <https://commons.wikimedia.org/w/index.php?curid=30131668>

Joint Types

Synarthroses

- Immovable
- Found in skull & pelvic bone

Amphiarthroses

- Some movement, without a cavity
- Found in pubic symphysis & intervertebral discs

Diarthroses

- Movable joint cavity
- Filled with fluid
- Found in elbow, fingers, knees, hips, shoulders

Diarthrosis Class Locations

Hinge

- Elbow

Pivot

- Between C1 & C2 vertebrae

Ball-and-socket

- Hip

Condyloid

- Between radius & carpal bones (wrist)

Planar

- Wrist & ankle

Diarthrosis Joints

Outer layer

- White fibrous connective tissue
- Blends with periosteum of bone

Inner layer

- Contains synovial membrane
- Does not connect to periosteum
- Produces synovial fluid (for lubrication & cushioning)