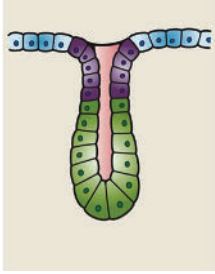


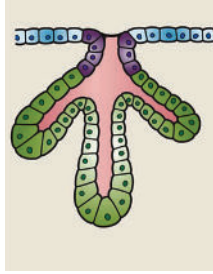
GLANDS

Simple Tubular



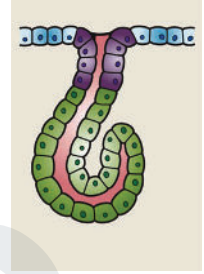
- Shaped like a tube
- Found in the intestine

Simple Branched Tubular



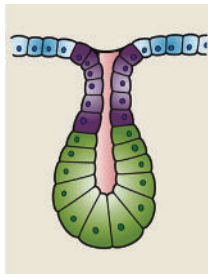
- One duct with branches
- Found in stomach & uterus

Simple Coiled Tubular



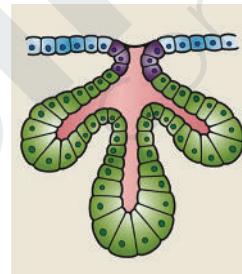
- Coiled
- Found in the sweat glands

Simple Alveolar



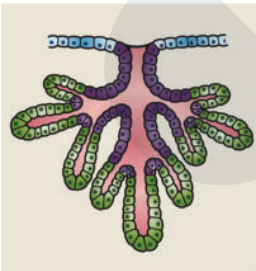
- Sac-like shape
- Found in sebaceous glands

Simple Branched Alveolar



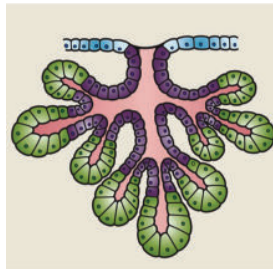
- Secretory portions are branched & sac-like
- Found in the sebaceous glands

Compound Tubular



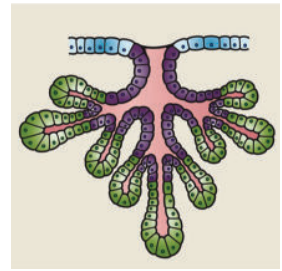
- Multiple internal ducts
- Found in the liver

Compound Alveolar



- Multiple internal ducts with sacs
- Found in the pancreas, mammary glands and salivary glands

Compound Tubuloalveolar



- Multiple tubes with branches & sacs
- Found in the intestine

Attribution: By Artwork by Holly Fischer - [http://open.umich.edu/education/med/resources/second-look-series/materials - Histology of Glands](http://open.umich.edu/education/med/resources/second-look-series/materials-Histology%20of%20Glands) Slide 6, CC BY 3.0, <https://commons.wikimedia.org/w/index.php?curid=24367147>

Attribution: By Artwork by Holly Fischer - [http://open.umich.edu/education/med/resources/second-look-series/materials - Histology of Glands](http://open.umich.edu/education/med/resources/second-look-series/materials-Histology%20of%20Glands) Slide 6, CC BY 3.0, <https://commons.wikimedia.org/w/index.php?curid=24367148>