

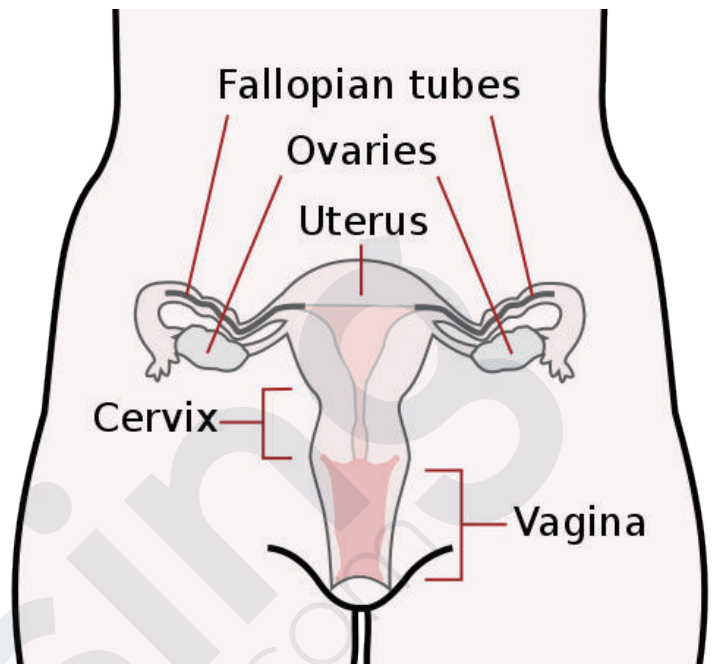
INCOMPETENT CERVIX PATHOCHART

PATHOPHYSIOLOGY

Incompetent cervix, or cervical insufficiency, is the premature thinning and dilation of the tubular end of the uterus (cervix). When the cervix is weakened, it cannot withstand the pressure of a growing fetus and begins to open too early. This can lead to premature birth or miscarriage, usually between 14 - 24 weeks gestation. A cervical cerclage may be placed vaginally to tie the cervix closed until the latter part of the third trimester, but not all patients are candidates for this procedure.

ASSESSMENT FINDINGS

- Pelvic pressure
- Abdominal cramping (premenstrual-like)
- Back Ache
- Change in vaginal discharge
- Light vaginal bleeding or spotting



DIAGNOSTICS

- Pelvic Exam
- Ultrasound

NURSING PRIORITIES

- Promote comfort
- Maintain safety
- Assess and monitor bleeding

THERAPEUTIC MANAGEMENT

- Cerclage
- Bedrest
- Prevent preterm labor

MEDICATION THERAPY

- Tocolytics
- Corticosteroids
- Analgesics