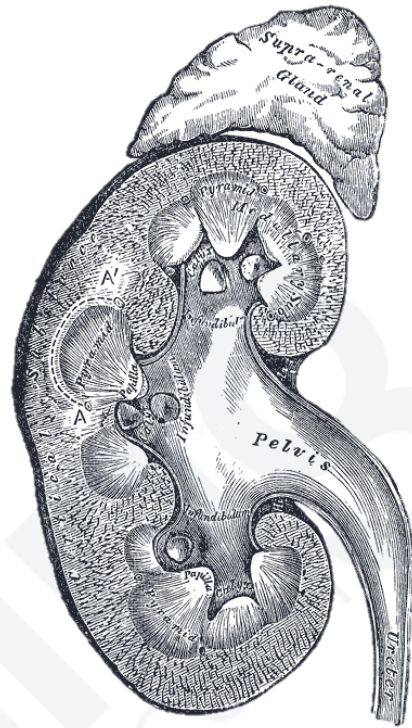


# ADDISON'S VS. CUSHING'S

## ADRENAL GLAND DISORDERS

The Adrenal Glands sit on top of the kidneys. The Adrenal Cortex secretes glucocorticoids, mineralocorticoids, and androgen hormones. Addison's and Cushing's Disease are conditions of either too little (hypo) or too much (hyper) secretion of hormones from the adrenal cortex.



Body System	Addison's (Hypo)	Cushing's (Hyper)
Cardiovascular	Hypotension Tachycardia	Hypertension Volume Overload
Metabolic	Weight Loss	Moon Face Buffalo Hump
Integumentary	Hyperpigmentation (bronze skin)	Fragile Skin Striae on Abdomen
Electrolytes	Hypercalcemia Hypoglycemia Hyperkalemia Hyponatremia	Hypocalcemia Hyperglycemia Hypokalemia Hypernatremia