

TYPES OF SKIN CANCER

Suspicious Mole	
A	Asymmetry
B	Border irregularity
C	Color change
D	Diameter > 6mm
E	Evolving / Elevated



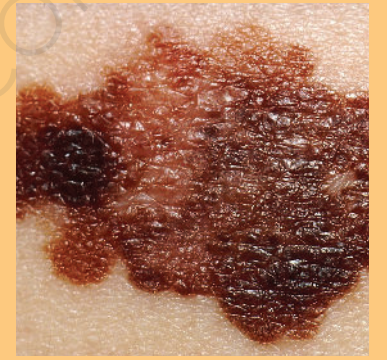
Basal Cell Carcinoma

- Caused by UV exposure
- Pink, shiny lesion
- Most common
- Least likely to spread



Squamous Cell Carcinoma

- Caused by UV exposure
- Red, scaly patch
- Deeper ulceration



Melanoma

- Caused by UV exposure
- Abnormal mole (ABCDE)
- Most likely to metastasize/spread