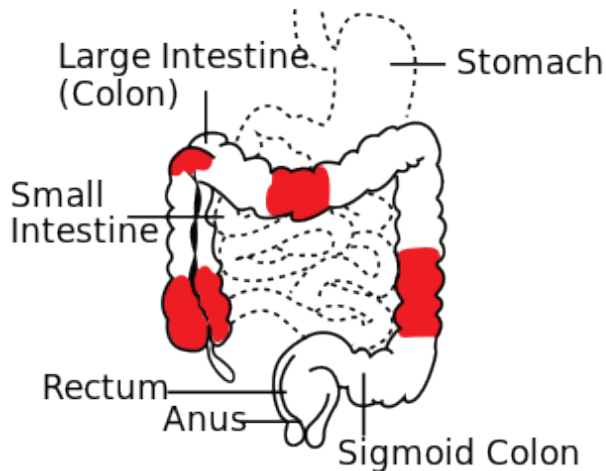
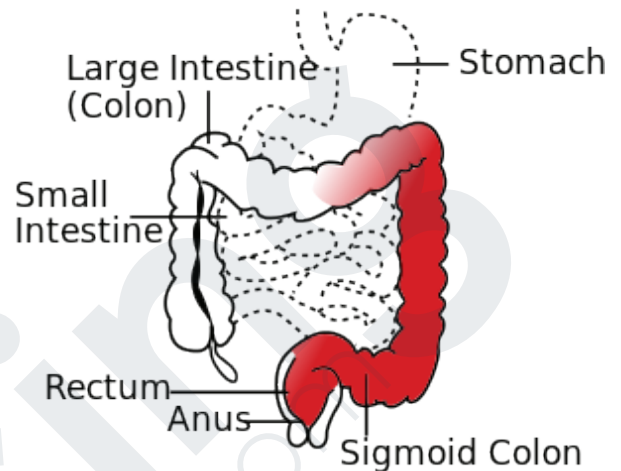


ULCERATIVE COLITIS VS. CROHN'S DISEASE

Crohn's Disease and Ulcerative Colitis are two forms of Inflammatory Bowel Disease - autoimmune diseases affecting the GI tract. Here's how to tell them apart:



Crohn's Disease



Colitis ulcerosa

By Own work - google search: "crohn Colitis ulcerosa", CC BY-SA 3.0, <https://commons.wikimedia.org/w/index.php?curid=39701853>

CROHN'S DISEASE:

- Affects entire GI tract
- May affect other body systems
 - Especially skin & lymphatic system
- Thickening + Scarring + Abscesses
- 5-6 Stools/day
 - Pus & mucus

ULCERATIVE COLITIS:

- Affects colon & rectum
 - Progressive from rectum to cecum
- Poor absorption of nutrients
- Edema + Lesions + Ulcers
- 10-20 Stools/day
 - Blood & mucus