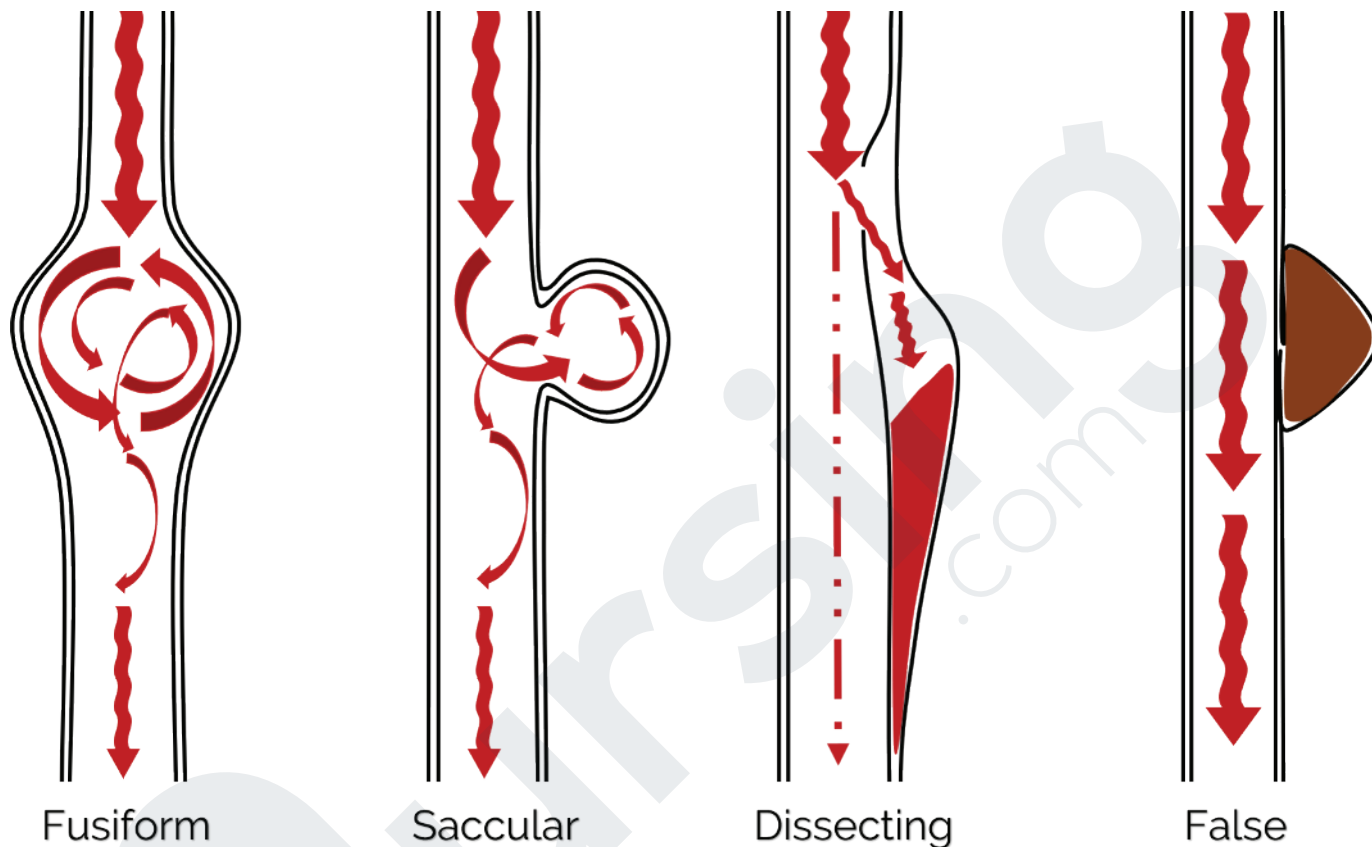


TYPES OF ANEURYSMS

An Aneurysm is an outpouching of the vessel wall due to weakened vessel muscle layers. This is usually caused by hypertension. Blood flow becomes turbulent at the site of the aneurysm, putting it at high risk for rupture.



By Nichole Weaver, © NRSNG, LLC.

FUSIFORM

Fusiform aneurysms surround the full circumference of the vessel. This is common in the Abdominal Aorta.

SACCULAR

Saccular aneurysms pouch out from one side of the vessel. Also called "Berry Aneurysms".

DISSECTING

Dissection occurs when the inner layer of the vessel is torn away. Blood flows between vessel layers instead of forward.

FALSE

False aneurysms appear on scans, but are actually a blood clot formed outside the vessel. Blood flow is not impeded.