

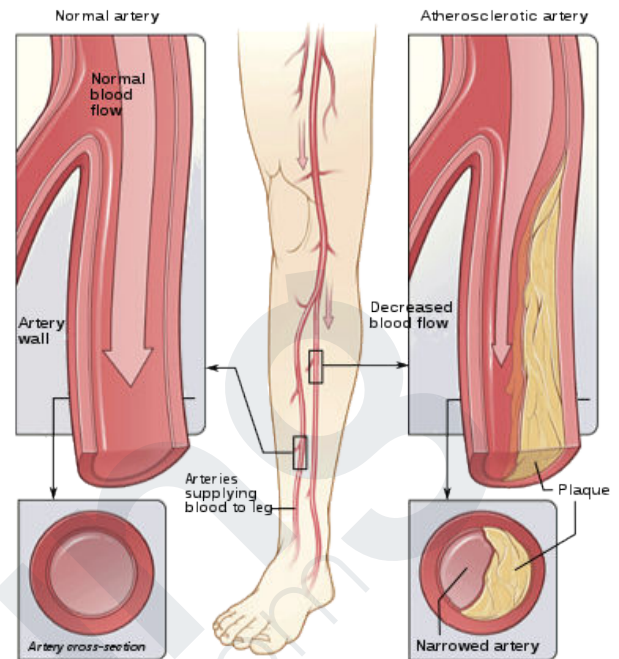
PERIPHERAL ARTERY DISEASE PATHOCHART

PATHOPHYSIOLOGY

Chronic occlusion of the arteries in the lower extremities, typically caused by atherosclerosis. These atherosclerotic plaques cause blockage in the arteries, leading to decreased oxygen supply to the tissues

ASSESSMENT FINDINGS

- Intermittent Claudication
- Numbness and tingling in extremities
- Hair loss on lower extremities
- Cool, pale skin on extremities
- Swelling
- Diminished pulses
- Ulceration in extremities



By Jmarchn - Own work, CC BY-SA 3.0,
<https://commons.wikimedia.org/w/index.php?curid=31200275>

DIAGNOSTICS

- Ankle-Brachial Index (ABI)
- Ultrasound
- Angiography
- Blood Tests - Cholesterol and Lipid levels

NURSING PRIORITIES

- Assess peripheral circulation
- Optimize perfusion to lower extremities
- Educate patient on smoking cessation
- Promote comfort

THERAPEUTIC MANAGEMENT

- Diet and exercise to lower cholesterol levels and improve circulation to lower extremities
- Bypass grafting
- Angioplasty
- Endarterectomy

MEDICATION THERAPY

- Statins
- Vasodilators
- Calcium Channel Blockers