

ATELECTASIS PATHOCHART

PATHOPHYSIOLOGY

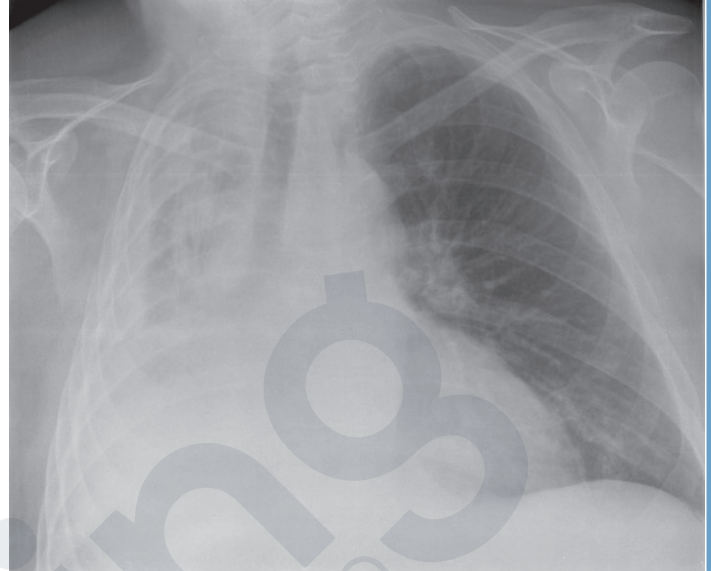
When the alveoli of the lungs deflate or collapse. Happens usually after surgery.

ASSESSMENT FINDINGS

Night sweats, chills, fatigue, weight loss, persistent cough, purulent sputum, anorexia.

DIAGNOSTICS

- Chest x-ray will diagnose atelectasis



By The original uploader was Pablos at Spanish Wikipedia - Transferred from es.wikipedia to Commons., CC BY-SA 3.0, <https://commons.wikimedia.org/w/index.php?curid=1753377>

NURSING PRIORITIES

- Optimize activity tolerance
- Ensure effective breathing pattern
- Promote optimal tissue perfusion

THERAPEUTIC MANAGEMENT

- Chest Physiotherapy (CPT) which gives vibrations to loosen up and open the alveoli
- IPPB machines that push air into the lung and helps it open up
- Nebulizers with breathing medications
- Monitor oxygen saturation.

MEDICATION THERAPY

- Albuterol