

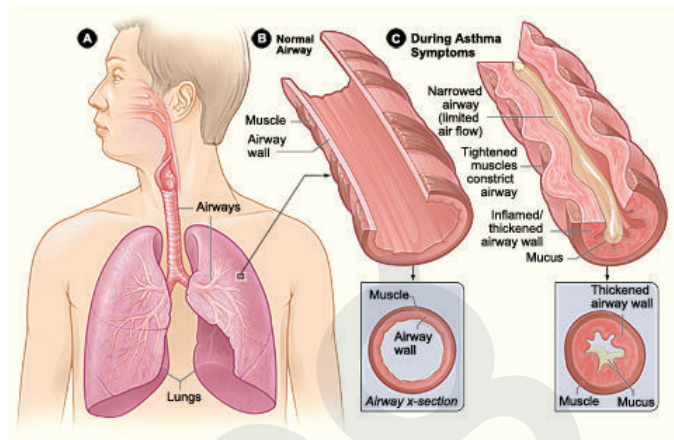
ASTHMA PATHOCHART

PATHOPHYSIOLOGY

Asthma is an inflammatory disorder of the airways stimulated by triggers (infection, allergens, exercise, irritant). Status asthmaticus is a life-threatening condition unresponsive to treatment.

ASSESSMENT FINDINGS

Dyspnea, coughing, wheezing, crackles, increased mucous production, use of accessory muscles, increased work of breathing, low oxygen saturation, restlessness, agitation, anxiety, tachypnea, diminished breath sounds



DIAGNOSTICS

- Pulmonary function tests
- Forced vital capacity
- Forced expiratory volume and peak expiratory flow.
- ABGs
- Chest x-ray

NURSING PRIORITIES

- Promote sufficient gas exchange
- Ensure effective breathing pattern
- Promote optimal tissue perfusion

THERAPEUTIC MANAGEMENT

- Provide supplemental oxygen
- Remove irritant (if applicable)
- Closely monitor vitals
- Continuous cardiac monitoring
- Administer medications
- Decrease anxiety

MEDICATION THERAPY

- Bronchodilators
- Cholinergic antagonists
- Anti-inflammatory agents and/or combos