

# NEWBORN ASSESSMENT

## APGAR Score

Appearance	1 Minute	5 Minutes
Pink torso and extremities	2	
Pink torso, blue extremities	1	
Blue all over	0	
Pulse	1 Minute	5 Minutes
> 100	2	
< 100	1	
Absent	0	
Grimace	1 Minute	5 Minutes
Vigorous cry	2	
Limited cry	1	
No response to stimulus	0	
Activity	1 Minute	5 Minutes
Actively moving	2	
Limited movement	1	
Flaccid	0	
Respiratory Effort	1 Minute	5 Minutes
Strong loud cry	2	
Hypoventilation, irregular	1	
Absent	0	
<b>Total:</b>		

8-10 normal, 4-6 moderate depression, 0-3 aggressive resuscitation

## Normal Measurements

**Weight:** 6-10 lbs.  
**Length:** 18-22 in.  
**Head circumference:** 33-35 cm.  
**Chest circumference:** 30-33 cm.

## Meds and Labs

**Vitamin K:** prevent hemorrhage  
**Optic Antibiotic:** prevent newborn blindness  
**PKU Level:** After 24 hrs of age when good feedings have occurred  
**Coombs' Test:** if mother Rh-neg.  
**Immunizations:** Hep-B can be given

## Newborn Assessment

**Appearance:** pink, loud cry, well-flexed, full ROM

### Fontanelles:

anterior (diamond-shaped),  
posterior (triangular)

### Mouth:

assess for cleft lip or palate

### Heart:

assess for murmur

### Respirations:

assess breathing

### Umbilical Cord:

1 vein, 2 arteries clamped

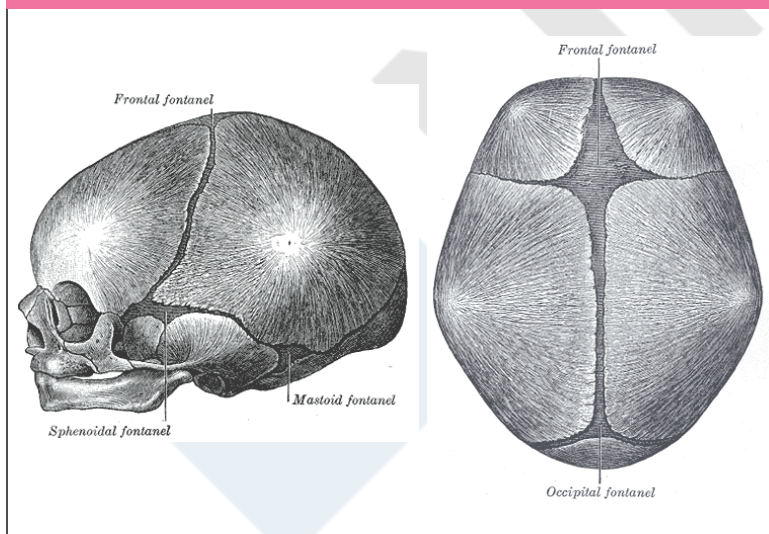
### Extremities:

equal length  
10 fingers and toes

### Genitalia:

male: testes palpable  
female: discharge of blood or mucus normal

## Fontanelles



## Possible Complications During Delivery

Meconium Aspiration  
Cord Presentation  
Breech Presentation

Limb Presentation  
Postpartum Hemorrhage