

NEWBORN ASSESSMENT

APGAR Score

Appearance	1 Minute	5 Minutes
Pink torso and extremities	2	
Pink torso, blue extremities	1	
Blue all over	0	
Pulse	1 Minute	5 Minutes
> 100	2	
< 100	1	
Absent	0	
Grimace	1 Minute	5 Minutes
Vigorous cry	2	
Limited cry	1	
No response to stimulus	0	
Activity	1 Minute	5 Minutes
Actively moving	2	
Limited movement	1	
Flaccid	0	
Respiratory Effort	1 Minute	5 Minutes
Strong loud cry	2	
Hypoventilation, irregular	1	
Absent	0	
Total:		

8-10 normal, 4-6 moderate depression, 0-3 aggressive resuscitation

Normal Measurements

Weight: 6-10 lbs.
Length: 18-22 in.
Head circumference: 33-35 cm.
Chest circumference: 30-33 cm.

Meds and Labs

Vitamin K: prevent hemorrhage
Optic Antibiotic: prevent newborn blindness
PKU Level: After 24 hrs of age when good feedings have occurred
Coombs' Test: if mother Rh-neg.
Immunizations: Hep-B can be given

Newborn Assessment

Appearance: pink, loud cry, well-flexed, full ROM

Fontanelles:

anterior (diamond-shaped),
posterior (triangular)

Mouth:

assess for cleft lip or palate

Heart:

assess for murmur

Respirations:

assess breathing

Umbilical Cord:

1 vein, 2 arteries clamped

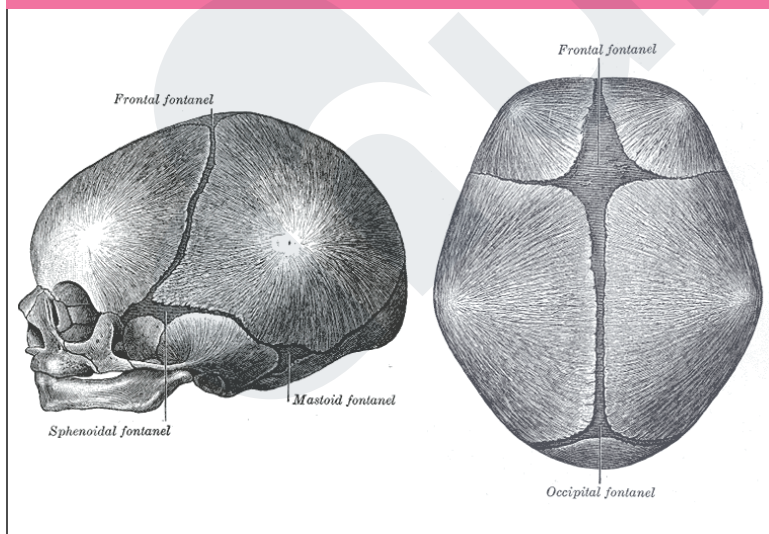
Extremities:

equal length
10 fingers and toes

Genitalia:

male: testes palpable
female: discharge of blood or mucus normal

Fontanelles



Possible Complications During Delivery

Meconium Aspiration
Cord Presentation
Breech Presentation

Limb Presentation
Postpartum Hemorrhage