

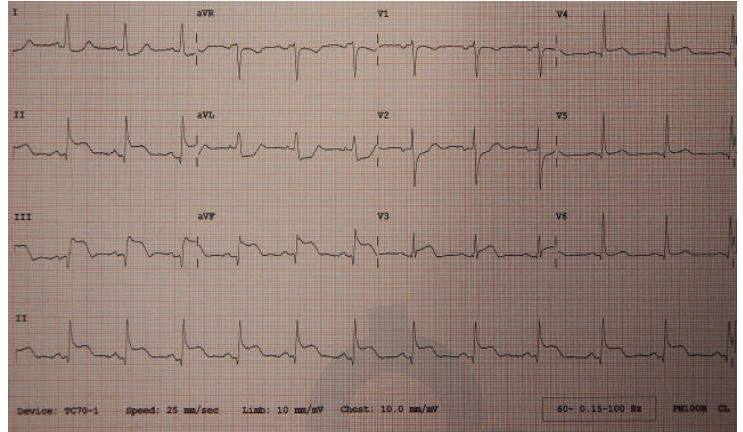
MI PATHO CHART

PATHOPHYSIOLOGY

Sudden restriction of blood supply to a portion of the heart, which creates an imbalance between myocardial oxygen supply and demand.

ASSESSMENT FINDINGS

Chest pain unrelieved by rest, crushing chest pain, diaphoresis, mottled skin, nausea, anxiety, SOB, palpitations, ST elevation on 12-lead, elevated Troponins (most sensitive), elevated CK-MB



By James Heilman, MD - Own work, CC BY-SA 4.0,
<https://commons.wikimedia.org/w/index.php?curid=40647852>

DIAGNOSTICS

- Blood pressure assessment
- ECG
- Cardiac enzymes (CK, CK-MB, troponin T, troponin I, myoglobin)
- Cardiac catheterization

NURSING PRIORITIES

- Promote Optimal Cardiac Output
- Optimize Tissue Perfusion
- Assess and Manage Pain

THERAPEUTIC MANAGEMENT

- MONA - morphine, oxygen, nitroglycerin, aspirin
- Rest to decrease O2 demands of heart
- Monitor ECG
- Continuous cardiac monitoring

MEDICATION THERAPY

- Oxygen
- Vasodilators
- Antiplatelets
- Analgesics
- Beta-blockers
- Thrombolytics
- Anticoagulants