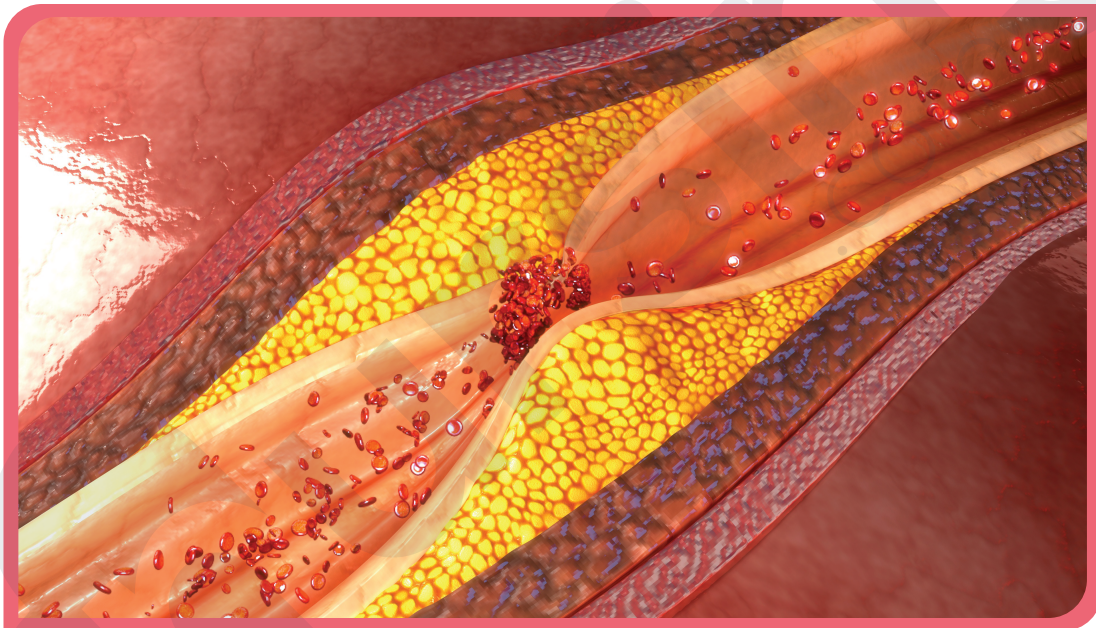


ANGINA

Chest pain resulting from inadequate blood flow to heart muscle. Most common cause is coronary artery disease (CAD). Other causes include anemia, heart failure, abnormal rhythms.

	STABLE	UNSTABLE	VARIANT
ONSET	Exertion/Stress	Rest/Exertion/Stress	Typically at Rest
PREDICTABLE	Predictable	Unpredictable	Unpredictable
DURATION	<5 min	Up to 30 min	Varies
RESOLUTION	Rest or Nitro	May Resolve with Nitro	May Resolve with Nitro



ASSESSMENT	DIAGNOSIS	INTERVENTIONS
Pain	EKG	PAIN: provide rest and administer nitro as prescribed
Dyspnea	Stress Test	O2: provide supplemental oxygen to the patient
Pallor	Cardiac Biomarkers	12 LEAD EKG: obtain 12 lead ekg
Sweating	Cardiac Cath	REST: maintain bed rest to reduce O2 demands
Tachycardia		ASSESS: assess vital signs and pain
Syncope		
HTN		