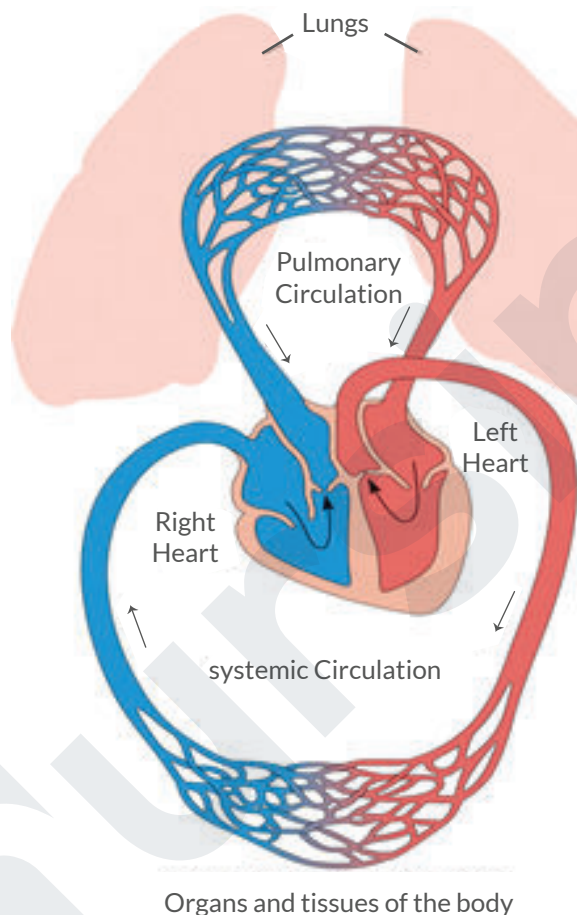


R v L HEART FAILURE

Left Ventricle is unable to pump blood into the systemic circulation causing a “back-up” into the pulmonary circulation.

Right Ventricle is unable to pump blood into the pulmonary circulation causing a “back-up” into venous circulation.



Symptoms:

- Shortness of Breath
- Dyspnea on Exertion
- Crackles
- Pink-Frothy Sputum
- Cyanosis
- Fatigue
- Orthopnea
- Tachycardia
- Confusion
- Restlessness

Symptoms:

- Jugular venous Distention
- Fatigue
- Ascites
- Anorexia
- GI distress
- Weight Gain
- Dependent Edema
- Venous Stasis