

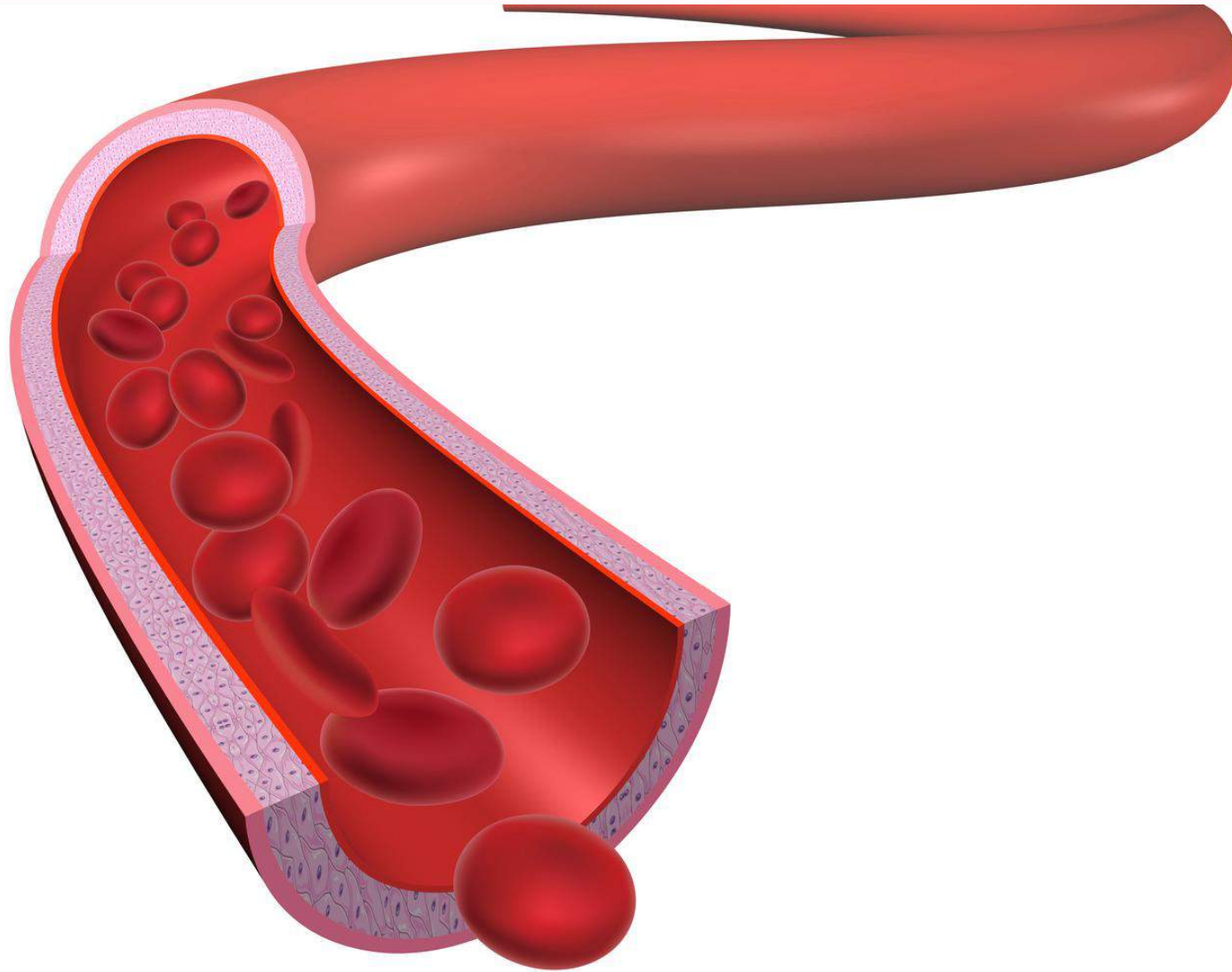
Thrombophlebitis

Virchow's Triad

- Thrombus (clot) formation with inflammation.
- **Virchow's Triad**
 - Venous Stasis
 - Damage to inner lining of vein
 - Hypercoagulability of blood



Thrombus vs Embolus



Assessment

- **Risk factors**
 - history of thrombophlebitis, pelvic surgery, obesity, HF, a-fib, immobility, MI, pregnancy, IV therapy, hypercoagulability
- **Assessment findings**
 - unilateral edema
 - pain
 - warm skin
 - febrile state
 - **Homan's sign** - pain on dorsiflexion of foot



Therapeutic Management

- analgesia
- ultrasound to confirm finding
- monitor respiratory status
 - report pink sputum, tachypnea, tachycardia, chest pain (signs of **pulmonary embolism**)
- monitor circumference of affected limb
- monitor distal pulses
- smoking cessation
- avoid long periods of sitting
- elevate legs 10-20 min every few hours
- monitor PT and INR for patients on Coumadin (warfarin)
- monitor PTT for patients on Heparin therapy



IVC Filter

